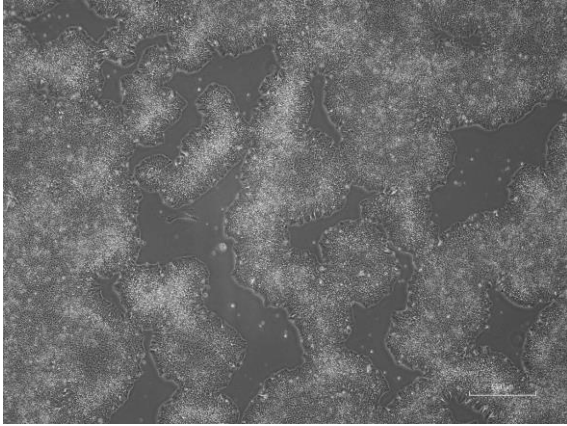
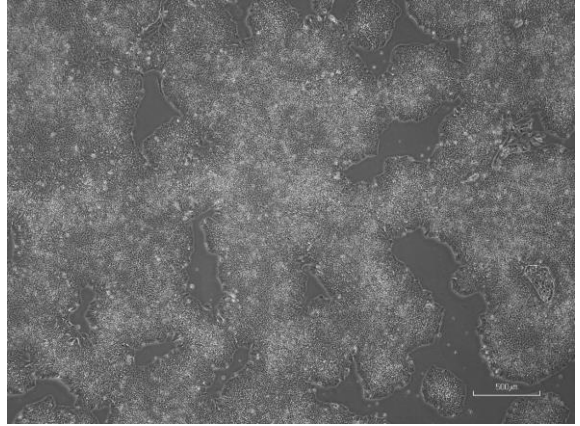


## 【 CiRA-jk-0100 】 Morphology of iPSC colonies

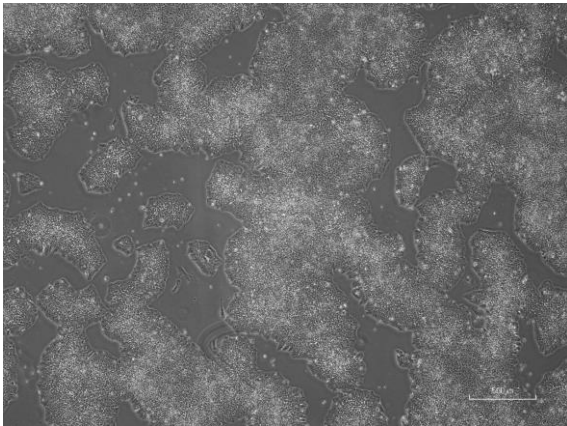
CiRA-jk-0100-A: passage-3



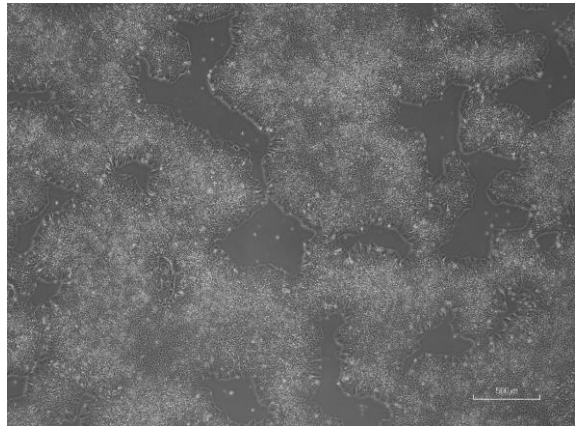
CiRA -jk-0100-B: passage-3



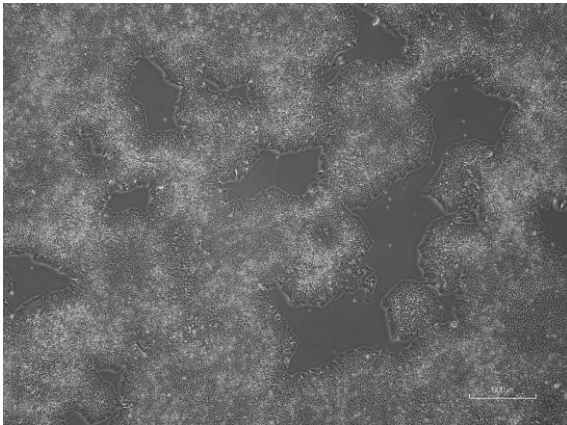
CiRA -jk-0100-C: passage-3



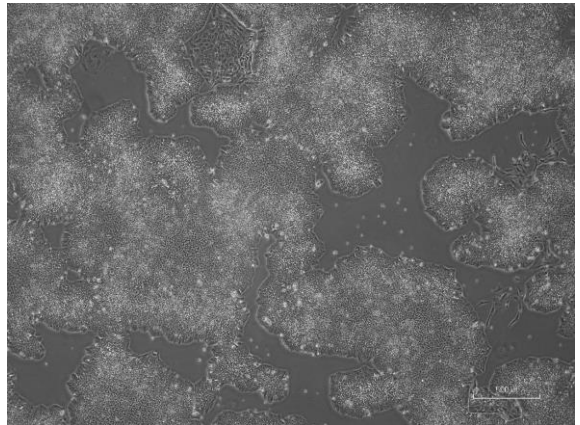
CiRA -jk-0100-D: passage-3



CiRA -jk-0100-E: passage-3



CiRA -jk-0100-F: passage-3



( All images were captured at 4x magnification )